

home



MINIATURE CLAMP

**Material-** Call for material specifications  
**Insert-** Brass

**Projecting Stud-** Steel, zinc plated  
 † Projecting Stud- Stainless steel



1770



2700



2710



7094



2720



2700



7094



7094 (No hub)



2715



2720



2730

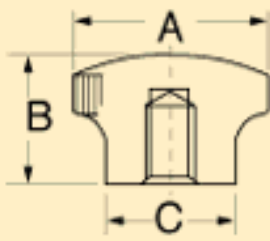
**Threaded Insert**

Part No.	Insert	
	Thread	Depth
<a href="#">2720-A</a>	10-24	5/16
<a href="#">2720-Q</a>	8-32	1/4
<a href="#">2720</a>	10-32	5/16
1 "B" = 1/2, "D" = 21/64		

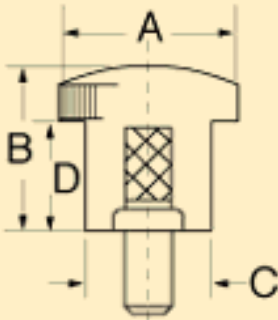
**Projecting Stud**

Part No.	Stud	Max Length

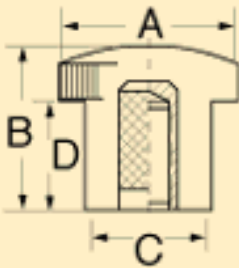
### Molded Thread



### Projecting Stud



### Threaded Insert



	Thread	Length	
<a href="#">2720-L</a>	8-32	3/8	1-1/2
*Molded plain hole for 1/4" Allen head cap screw press fit 1 "B" = 1/2, "D" = 21/64			

[← back](#)